



Global Doctoral Human Resource Development Program for Leading the AI Field through Interdisciplinary Integration (Guide4AI) Recruitment of Program Students AY2026

Selected by JST's "Support for Pioneering Research Initiated by the Next Generation" Program in 2024, Global Doctoral Human Resource Development Program for Leading the AI Field Through Interdisciplinary Integration (Guide4AI) has been providing support to students

Better Co-beingプログラムのホームページ
https://higoprogram.jp/en/bettercobeing_english/



For Students in a doctoral program who enrolled in April 2025, OR students in a 4-year program who enrolled in April 2024 (i.e., students who will be in their 2nd year of a regular doctoral program or 3rd year of a 4-year doctoral program as of April 2026). Students who enrolled in October are excluded.

Inquiries : Institute for Education and Student Affairs, Graduate Program Education Promotion Division
E-mail: daigakuin-kyoiku@jimu.kumamoto-u.ac.jp

Outline for the Guide4AI (Global PhD Program for Leading AI through Interdisciplinary Integration)

Challenges to increase doctoral human resources for AI

(No. 1) Concerns about the long duration of studies and financial burdens.

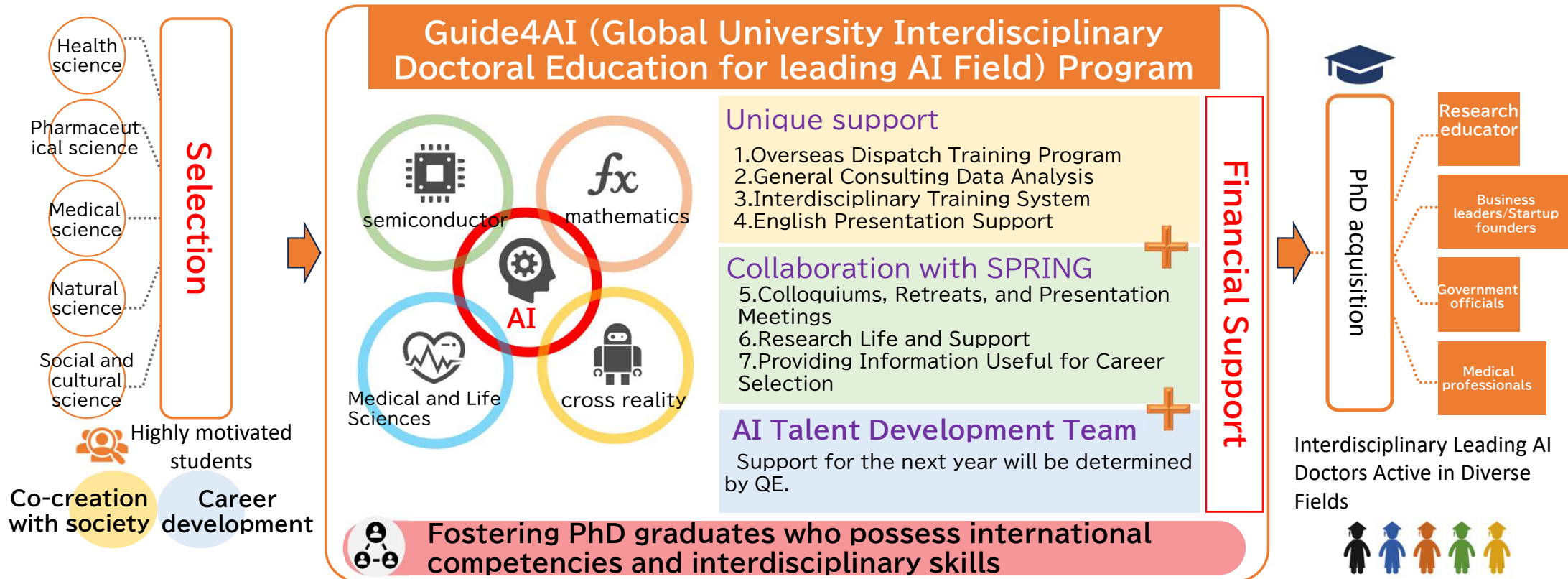
➔ The program provides financial support of 3.9 million yen per year (including 900,000 yen for research expenses) and career path support

(No. 2) Support system at the university level to acquire the latest AI technologies

➔ Guidance and advice based on the latest AI technologies and trends by the Next-Generation AI Talent Development Team

(No. 3) Strengthening the Academic Network

➔ Collaboration with SPRING to cultivate internationalism and interdisciplinarity, and acquire transferable skills.



Notes on Application

- **Completion Requirements**

(1) To give a presentation* on AI research at an international conference. However, if the international conference is a peer-reviewed, acceptance of the paper can be substituted for the presentation

(2) To participate in the reporting sessions held by the program

*International conferences are expected to be in the field of the admitted student's research

- **Important Notes**

- This program is designed to cultivate the next generation of talent in the field of AI (including both established and emerging/converging areas within AI). It is not simply about using AI as a tool, but rather about supporting students who have the ambition and ability to pioneer and lead the next generation of AI
- The Overseas Training Program aims to equip students with the knowledge and connections needed to become future pioneers and leaders in the next generation of AI. This will be achieved through activities such as gathering information on the latest AI trends and networking with top researchers in the field. (Travel and participation fees will be covered by research funds.) The program requires participation in international conferences that facilitate these goals, such as AAAI
- The details of the unique support described on the previous page will be determined in consultation with the Next-Generation AI Talent Development Team after admission to the program

Guide4AI Program Support

Financial Assistance

(1) Living Expenses : **250,000 yen per month**

(2) Research Funds : **900,000 yen per year**

Assistance will be paid for the standard period of enrolment
※ The amount of support may change depending on national policies and budgetary conditions.

- ※ Regarding living expenses, after recruitment, the first four months' worth (e.g., April-July) will be paid together in the final month (e.g., July), and thereafter it will be paid monthly.
- ※ The living expense equivalent is treated as miscellaneous income under tax law and is subject to income tax and residential tax.
- ※ Research funds will be allocated to and managed by the research laboratory to which you belong.

Interdisciplinary Collaboration and Career Path Formation Support

- **Mentor system**
Guidance on courses, research, presentation, English language, career paths, job hunting, etc.
- **Support/guidance from distinguished professors, Cross-disciplinary advisors**
Guidance on research, career path, etc.
- **Generic skill test (PROG test)** Support for examination fee and commentary sessions (Only in Japanese)

Doctoral Student Support Program

AY2026 (Spring) Recruitment Details

Graduate School	Graduate School of Social and Cultural Sciences, Graduate School of Science and Technology, Graduate School of Health Sciences, or Graduate School of Pharmaceutical Sciences at this university
Eligibility for Application	Students in a doctoral program who enrolled in April 2025, OR students in a 4-year program who enrolled in April 2024 (i.e., students who will be in their 2nd year of a regular doctoral program or 3rd year of a 4-year doctoral program as of April 2026). Students who enrolled in October are excluded.
Number of Students to be Accepted	Guide4AI Program: Approximately 1 ✖There is no school quota

Doctoral Student Support Program

Eligibility

- Those who have never been disciplined based on university regulations, etc.
- Those who are able to take part in the educational segment of this program throughout the support period

✘ Those who fall under the following are NOT eligible to apply

- Special Research Fellow of the Japan Society for the Promotion of Science
- Japanese government-sponsored students and international students receiving scholarships or other support from their home countries
- Individuals who receive stable income, such as salary or executive compensation, from universities, companies, etc., at a sufficient level equivalent to living expenses (annual income of 2.4 million yen or more).
- Applicants who are on leave of absence as of 1st April 2026 (at the time of selection as a program student)

Points to Note

Students who are selected for the program must comply with the following terms.

In the case that a student does not comply with any of these terms, payment of living expenses and the research grant may be suspended.

- (1) Students should focus on their research activities**
- (2) Attend research ethics education and compliance education conducted by the University**
- (3) Students should confirm enrolment each month**
- (4) Students should submit a research plan and a research report every year to the Program Supervisor**
- (5) Throughout the support period, participants are required to complete the following educational programs as defined by this program:**
 - Attend all colloquium and reporting sessions**
 - During the support period, those in the Guide4AI program must present AI research at international conferences (in the case of peer-reviewed international conferences, acceptance of the paper can be substituted for a presentation)**

International Conferences

- Present AI-related research at an international conference during the support period. (For peer-reviewed international conferences, acceptance of a paper may substitute for a presentation.)

Colloquium

- You can interact with graduate students from different fields and countries. Group Discussion and Presentation in English
- ex) Training camps, workshops, etc.
- ✂ The content changes every year.

Research and Learning Outcomes Debriefing Sessions

- You will acquire the skills to make presentations that are easy to understand for people in different fields.
- Evaluation by faculty members and distinguished advisors from outside the university
 - Continuation of receiving benefits review (Qualifying Examination)
- ✂ The method of holding the debriefing session changes every year

Application Process

Application guidelines and application documents can be downloaded from the website.
Please apply on the website. https://higoprogram.jp/en/bettercobeing_english/



- ◆ Program Application Form (fill out the application form directly)
 - We will also confirm your desire to apply for the Guide4AI program

Application Documents

1. Statement of Purpose
2. Research Proposal
3. Confirmation of documents to be submitted (checklist)
4. Score from an external English exam (if you have one)

1 Submission of application documents

Please check application guidelines and enter required information in following application form. Download forms for Written Statement for Reason of Application and Research Plan, fill them up and upload in Submission box

[Link for Application Form](#)

[Link for Files Submission](#)

*Link for submission method

- Consolidate the Statement of purpose, research plan, checklist and English score into a single PDF file and submit it to the submission box
- The file name is 「The symbol for your department - Full Name」
(E.g.) 「D - KUMAMOTO Taro.pdf」
* Make sure the school letter is a capital letter.
G: Social and Cultural Sciences D: GSST
R: Medical Sciences Y: Pharmaceutical Sciences W:Health Science

Doctoral Student Support Program

Application Process

Application period

May 1 (Fri) – May 15 (Fri) (strict deadline)

<Important Notes>

- In principle, changes cannot be made to the information provided after submission of the application documents
- Application documents will not be returned
- Applications with deficiencies (e.g., exceeding the maximum page limit) will not be reviewed.
- Those who provide false information in their application documents will lose their eligibility to apply, and even after selection, the decision to provide support may be revoked

Selection Examination

1. Written application (Japanese or English)



The following will be assessed:

- **Motivation** (Clarity of motivation, vision for career path, research enthusiasm, readiness and eagerness to cultivate interdisciplinary learning and interdisciplinary research skills, and motivation to pursue career path realization)
- **Research Plan** (Achievements, clarity of objectives, specificity and feasibility of plans, clarity of application documents, societal significance of research, potential for integration with other fields and creation of new academic domains, etc.)

2. Interview screening (Japanese or English)



You will be asked and evaluated on the following:

- **Motivation**
- **Reason for applying**
- **Research plan**
- **Career vision, etc.**

Interviews will be conducted via Zoom

The interview date and time are scheduled for
Mid-June (approximately 6/9 (Tue.) ~ 6/10 (Wed.))

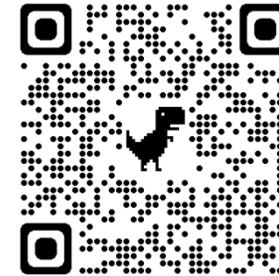
Details will be sent to you at a later date, to the email address you
used on the application form

Notification of Selection Results

We plan to notify applicants by the end of June.

Better Co-being Program, Guide4AI Program Q&A

https://higoprogram.jp/en/bettercobeing_english/



↓
Application Guidelines

↓
Steps from application
to selection

↓
FAQ
よくある質問はこちらから

1. Application
2. Enrolment
3. Financial Support
4. Obligations and Compliance for Program Participants
5. Other

If you have any other questions, please contact us at the following address!

Headquarters for Admissions and Education, Graduate Program Education Promotion Division
E-mail: daigakuin-kyoiku@jimu.kumamoto-u.ac.jp

Program Application-1

The following example is from a previous year. The notes remain unchanged, so please check them and fill in the form for this year

令和7年度（春季）Better Co-being社会を切り拓く異分野共創型博士イノベーター育成プログラム 申請フォーム application form

個人情報の取扱いについて (English below)

- (1) 申請書類に含まれる個人情報については、プログラム生の選考、その他本プログラムに係る業務を行うために利用します。
- (2) プログラム生の選考に用いた試験成績等の個人情報は、選考結果の集計・分析及び選考方法の調査・研究のために利用します。
- (3) 上記(1)及び(2)の業務を行うに当たり、一部の業務を外部の事業者へ委託する場合があります。この場合、外部の事業者と個人情報の取扱いが適切に行われるよう契約を結んだ上で、当該事業者に対して、取得した個人情報の全部又は一部を提供します。

Handling of personal information:

- (1) Personal information contained in the application documents will be used for selection of fellowship recipients and other purposes related to the fellowship program.
- (2) Personal information such as test results used for the selection of fellowship recipients will be used for the compilation and analysis of selection results and for the investigation and analysis of selection method.
- (3) In order to carry out (1) and (2), some aspects may be outsourced to an external company. In such a case, after making an appropriate contract for careful handling of personal information, all or part of the acquired personal information will be provided to the company.

1. 個人情報の取扱いについて Regarding the handling of personal information

同意する I agree

Program Application-2

2. 氏名 Name

回答を入力してください

3. フリガナ Name in katakana

回答を入力してください

4. 生年月日（西暦） Date of birth

日付を入力してください\yyyy/MM/dd



5. 携帯電話 Mobile phone

回答を入力してください

Program Application-3

6. Mail address

回答を入力してください

Please enter an email address where you can be reliably contacted

7. Mail address (re-enter)

回答を入力してください

8. 入学する教育部 Affiliation

- 社会文化科学教育部 Graduate School of Social and Cultural Sciences
- 自然科学教育部 Graduate School of Science and Technology
- 医学教育部 Graduate School of Medical Sciences
- 薬学教育部 Graduate School of Pharmaceutical Sciences
- 保健学教育部 Graduate School of Health Sciences

9. 採用年月日時点での指導教員（予定を含む） Supervisor as of the start of the program (including planned supervisor)

回答を入力してください

10. 申請について事前に指導教員の承諾を得ていること You must obtain prior approval from your supervisor for this application.

- 承諾を得ている approved

Before applying, be sure to obtain approval from your academic supervisor, or planned supervisor

Program Application-4

11. 年額240万円以上の安定的な収入を得ていないこと（アルバイトを除く） Do not have a job with an annual income of 2.4 million yen or more (excluding part-time jobs)

年額240万円以上の収入は無い No

Program Application-5

In addition to this program, please confirm that you can apply for or receive research funds, scholarships, and grants that you have applied for or have been selected to receive.

14. このプログラム及びGuide4AIプログラム以外に申請中または受給決定済みの研究費や奨学金がある場合はその名称と金額、支給期間を記載してください。
If there are any other research funds or scholarships you are applying for or have been awarded in addition to this program and Guide4AI Program, please list their names, amounts and durations.

回答を入力してください

15. このプログラム及びGuide4AIプログラム以外に申請中または受給決定済みの研究費や奨学金、補助金について、併願または併給ができることを確認してください。
If you are currently applying for other financial aids including scholarships or thinking about doing so, please ensure that you are allowed to apply for two or more concurrently or become a recipient of two or more financial aids at the same time by the financial aid offerors.

- 確認しました Yes, I have checked.
 該当無し Not applicable

16. 申請する研究テーマ Research theme for the application

回答を入力してください

17. 所持している英語スコア Score of external English test (such as TOEFL, TOEIC and IELTS)
無い場合は無いと回答。If not, answer "no".

回答を入力してください

18. 面接での使用言語を選択してください。 Please select the language you would like to use for the interview.

- 日本語 Japanese
 英語 English

Within 2 years of application

Program Application-6

19. 希望進路（予定） Desired career path (planned)

- アカデミア Research positions at universities, etc.
- 企業 private enterprise
- 官公庁 government administration office
- 起業 starting a business
- 海外 Overseas
- その他 other

20. その他を選択した場合は、詳細をお願いします。 If you selected "Other," please provide details.

回答を入力してください

21. 申請フォームは以上です。登録を完了すると、提出BOXのパスワードが表示されるため、必ずメモをお願いします。 That's it for the application form. When you complete the registration, the password for the submission box will be displayed, so please make sure to write it down.

- 申請を行う。 Make an application.

送信後に回答のコピーを印刷することができます

送信

When you press send, the password for the submission box for submitting the application documents will be displayed. Be sure to record your password so you don't forget it.

1. Statement of Purpose

※A4用紙1ページを超えている場合は、審査を行いません。
※If your paper is longer than one A4 page, it will not be reviewed.

所属 Affiliation	
氏名 Name	
申請 プログラム Programs to apply for	<input checked="" type="checkbox"/> AI 分野を先導する異分野融合型グローバル博士人材育成プログラム (Guide4AI program)

志望理由書

(プログラムを選んだ理由やキャリアビジョンなどについて)

Written Statement of Reasons for Application and Career Vision

- Please prepare in Japanese or English.
- Please fill in an easy-to-read typeface and font size of 11 or higher
- Fill out no more than 1 page
- Please fill out the statement of purpose, research plan, checklist, English score (only for those who have it)
- Consolidate into a single PDF file and submit to the submission box

2-1. Research Proposal Form A

※Please fill out Form A in no more than 2 pages

※ All applicants must submit (Form A)
Please fill out the contents in Form A in legible font style and size. Do not change the format of Form A. Negligible changes are acceptable, but Form A should not exceed two pages of A4 paper (including figures).

Research Plan

Name of applicant:
Name of graduate school and grade:
Name of Division (Department) :
Name of Supervisor:

Please fill in the graduate school affiliation and year, department (field), and name of your academic advisor as of the date indicated on the form.

Title of Master's thesis
* If you do not have a master's thesis, please write down the title of research you were performing before admission to doctoral course or the research you are currently performing.

Outline of Master's thesis or past research (figures can be included)

1

- Please prepare in Japanese or English.
- Please fill in an easy-to-read typeface and font size of 11 or higher
- Do not change the formatting.
- It is possible to insert figures and tables.
- You can submit in either colour and monochrome

※ All applicants must submit (Form A)
Please fill out the contents in Form A in legible font style and size. Do not change the format of Form A. Negligible changes are acceptable, but Form A should not exceed two pages of A4 paper (including figures).

Academic achievements:

-Peer-reviewed papers published in international journals or books (including papers in the press).

-Non-peer-reviewed papers published in international journals or books (including papers in the press).

-Papers submitted or in the revision stage for peer-reviewed international journals or books.

-Papers in domestic or non-English journals and books.

-Presentations at international academic conferences (including oral or poster presentation)

-Presentations at domestic academic conferences (including oral or poster presentation)

-External research funds acquired during the past 5 years (fund names, research titles, duration, amount and name of principal investigator).

-Items warranting special mention. (patents, awards, etc., if any)

2

2-2. Research Proposal Form C

※Please fill out Form C in no more than 2 pages

(Form C) Guide4AI Program	
<p>※To submit only for Guide4AI program applicants</p> <p>Please do not change the format of Form C. Fill out the contents in Form C in legible font style and size. Negligible changes are acceptable, but Form C should not exceed two pages of A4 paper (including figures).</p> <p>Title of your research proposal:</p> <p>I. Outline of research</p> <p>II. Background and purpose of research</p> <p>III. Significance (Include the possibility of interdisciplinary fusion with other research fields, contribution to the construction of a Well-Being society, etc.)</p> <p>IV. Experimental results obtained so far</p> <p>Results of previous experiments (including the results of preliminary studies). If you don't have any you can write "Nothing in particular".</p> <hr/> <p>V. Detailed research plan for AY2024</p> <p><Funding required: <u>900,000 yen</u>> Details of expenses:</p>	<p>※To submit only for Guide4AI program applicants</p> <p style="text-align: right;">(Form C) Guide4AI Program</p> <hr/> <p>VI. Detailed research plan for AY2025 and after</p> <p style="text-align: center;">900,000 yen for AY2026 and beyond</p> <div style="border: 2px solid blue; padding: 10px; text-align: center;"><p>If your submission is incomplete, you may be ineligible for review!</p></div> <ul style="list-style-type: none">● Please prepare in Japanese or English● Please fill in an easy-to-read typeface and font size of 11 or more● Do not change the formatting● It is possible to insert figures and tables● You can submit in either colour and monochrome <p>Please judge by yourself what content you think is suitable for this form</p>

3. Confirmation of application documents (Checklist)

□ Guide4AI Program Application Checklist

No.	checklist	check
1	"Statement of purpose" is limited to one page.	<input type="checkbox"/> Yes
2	The "Notes" page of "Statement of purpose" has been removed.	<input type="checkbox"/> Yes
3	"Research plan" is limited to two pages each of Form A and Form C .	<input type="checkbox"/> Yes
4	The format of "Statement of purpose" and "Research plan" have not been changed.	<input type="checkbox"/> Yes
5	No plagiarism has been committed in the preparation of the application documents.	<input type="checkbox"/> Yes
6	Did you use a generated AI to prepare your application documents?	<input type="checkbox"/> Yes/ <input type="checkbox"/> No
7	If you selected "Yes" in 6., please describe the application documents and the parts of the application where the generated AI was used and how it was used.	
8	Are the application documents in one PDF file in the following order 1. Statement of purpose 2. Research Plan (Form A and Form C) 3. Confirmation form (checklist) for application documents 4. English Score (only for those having one and limited to scores from English proficiency tests taken within the 2 years prior to the application submission)	<input type="checkbox"/> Yes

If the number of pages exceeds the specified number, it will not be reviewed.

When citing, be sure to cite the source to avoid unintentional plagiarism or infringement. It is recommended that each individual perform plagiarism checks using dedicated tools.

When using generative AI in scientific arguments, always be aware of truthfulness, honesty, and transparency.

* If the submitted documents are incomplete, they may not be subject to review.

Make sure to check your reports, papers, etc. for plagiarism!

To avoid unintended plagiarism, when creating applications, reports, papers, etc., make sure to check for plagiarism by yourself!

You can also check Japanese texts!

Please apply for a free iThenticate account using the link below

https://docs.google.com/forms/d/e/1FAIpQLSeJOyzE5p5b1Vj9qzhWvCP59VCG8i782-CMXn3Xji_UV0KiqA/viewform

充分ですか？ 論文チェック 論文の剽窃チェックは、
専用ツールで 手早く、カンタンに、適切に

ブラウザで論文をアップロードして、待つだけ！
たった数分で、世界最大級の学術情報データベースと照合、類似部分をお知らせ

アイセンティケイト
iThenticate®

Webで簡単アップロード

類似箇所がひとめでわかる

類似元の学術情報へすぐに移動

ブラウザでiThenticateにログインし、チェックする論文をアップロード

iThenticateがデータベース内の学術コンテンツとテキストマッチング

類似部分を確認、必要に応じて論文を加筆・修正

iThenticate®

アップロード

様々な形式のファイルに対応
Word, PDF (テキスト認識されたもの)、HTML、プレジテンツド等の形式に対応。単一ファイルも複数のファイルも、複数のファイルを2つにまとめて一括で、また入力欄に論文テキストをコピーペーストしてアップロードできます。

英語はもちろん、日本語もチェック可能
データベースには日本語の論文も含まれており、インターネット上の情報は言語を問わず収集しています。日本語の論文もチェックが可能です。

見やすい画面で類似部分をもれなく確認
iThenticateのデータベースと一致した箇所をハイライト表示で視覚的に把握でき、類似箇所も一括で確認できます。重複箇所、引用、学術情報提供、自己引用などの助言の表示も可能で、加筆・修正を行うことができます。

(問い合わせ先)
国立大学法人熊本大学 公正研究推進事務室 (内線:3242) ✉ boushi@jimu.kumamoto-u.ac.jp