

**What will now play is an explanatory video for the "Guide4AI Program."**

# Outline for the Guide4AI (Global PhD Program for Leading AI through Interdisciplinary Integration)

## Challenges to increase doctoral human resources for AI

(No. 1) Concerns about the long duration of studies and financial burdens.

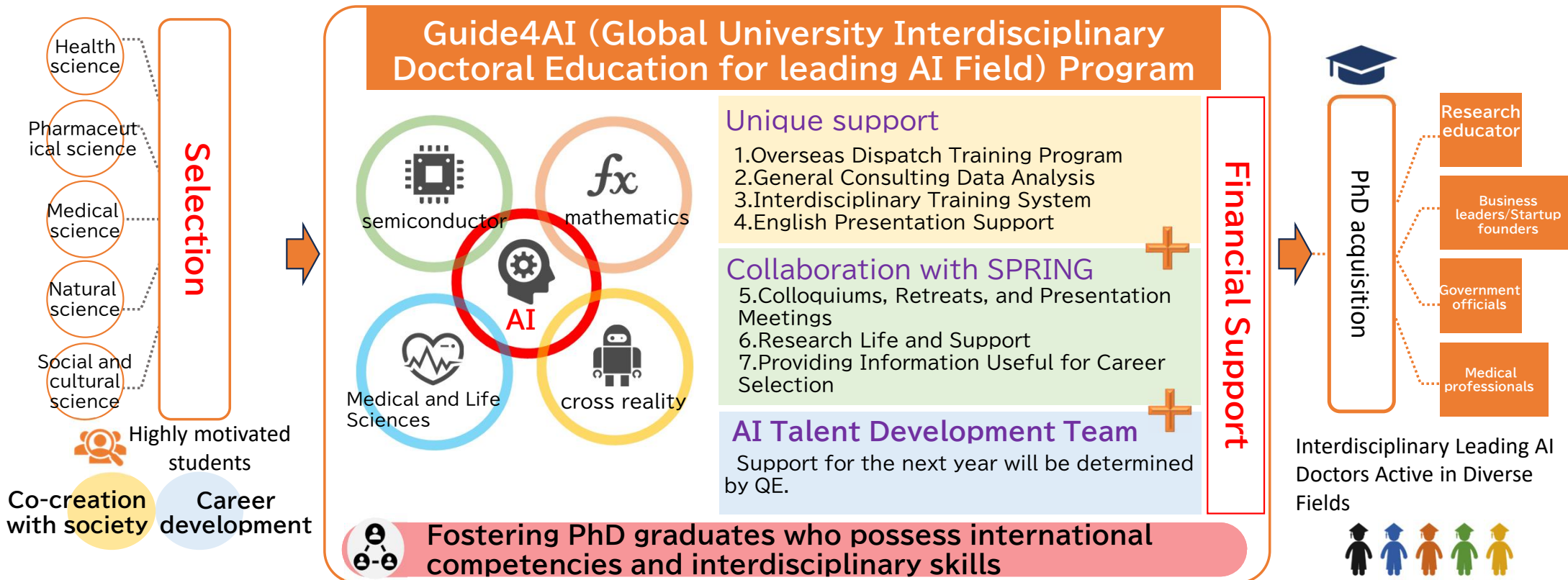
➡ The program provides financial support of 3.9 million yen per year (including 900,000 yen for research expenses) and career path support

(No. 2) Support system at the university level to acquire the latest AI technologies

➡ Guidance and advice based on the latest AI technologies and trends by the Next-Generation AI Talent Development Team

(No. 3) Strengthening the Academic Network

➡ Collaboration with SPRING to cultivate internationalism and interdisciplinarity, and acquire transferable skills.



# Notes on Application

## Please Note

**This October recruitment does not apply to the School of Health Sciences and the School of Social and Cultural Sciences**

- **Completion Requirements**

(1) To give a presentation\* on AI research at an international conference. However, if the international conference is a peer-reviewed, acceptance of the paper can be substituted for the presentation

(2) To participate in the reporting sessions held by the program

\*International conferences are expected to be in the field of the admitted student's research

- **Important Notes**

- This program is designed to cultivate the next generation of talent in the field of AI (including both established and emerging/converging areas within AI). It is not simply about using AI as a tool, but rather about supporting students who have the ambition and ability to pioneer and lead the next generation of AI
- The Overseas Training Program aims to equip students with the knowledge and connections needed to become future pioneers and leaders in the next generation of AI. This will be achieved through activities such as gathering information on the latest AI trends and networking with top researchers in the field. (Travel and participation fees will be covered by research funds.) The program requires participation in international conferences that facilitate these goals, such as AAAI
- The details of the unique support described in points 1 through 4 on the previous page will be determined in consultation with the Next-Generation AI Talent Development Team after admission to the program