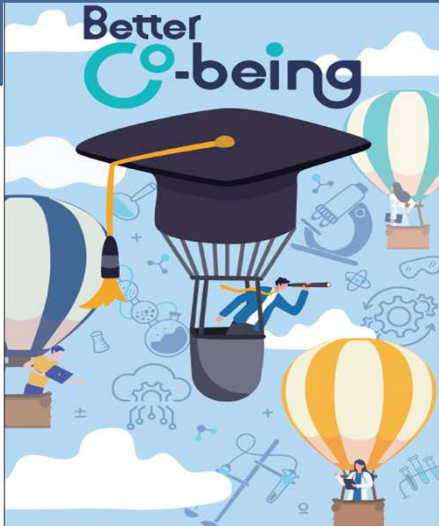


# “Support for Pioneering Research Initiated by the Next Generation” Program for Fostering Innovators to Lead a Better Co-being Society

## AY2026 Program Recruitment

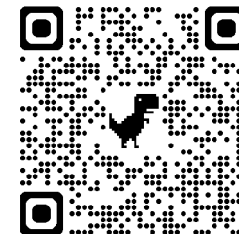


Since 2024, support has been provided through the JST “Next-Generation Researcher Challenging Research Program,” specifically through the Better Co-being Program

Better Co-being Program Website

[https://higoprogram.jp/en/bettercobeing\\_english/](https://higoprogram.jp/en/bettercobeing_english/)

For details on the recruitment overview,  
[Better Co-being Program Website](#)



Starting from AY2026, SPRING has introduced a new classification system. Under this Program, support will be provided according to the following categories:

**【Category 1】Japanese students**

**【Category 2】 International students (including government-sponsored international students)**

Contact: Institute for Education and Student Affairs, Graduate Program Education Promotion Division

E-mail: [daigakuin-kyoiku@jimu.kumamoto-u.ac.jp](mailto:daigakuin-kyoiku@jimu.kumamoto-u.ac.jp)

# Support for Pioneering Research Initiated by the Next Generation Program for Fostering Innovators to Lead a Better Co-being Society

Modern society faces complex challenges that are difficult to predict

COVID-19



Climate Change and Large-Scale Natural Disasters



We need to build a Well-being society where each person can live safely, securely, and healthily.

From the Well-being of each individual to the Co-being of society as a whole

- **Specialized Knowledge (Strengthening Research Capabilities) × Comprehensive Knowledge (Humanities and Sciences Integration)**
- **Transferable Skills**
- **Ability to think freely and solve problems**



- **Courses that can accommodate a variety of careers**
- **Providing a place for cross-disciplinary co-creation and challenge**



Medical, Pharmacy, Health Science, Science and Technology, Social and Cultural Science Graduate Schools & External Collaborating Organizations as One Team

Solving complex issues in response to an unpredictable society, the Better Co-being aims to lead society while fostering international doctoral talents who can contribute to science, technology, and innovation in various careers and fields, and become knowledgeable leaders.

# Support through the Better Co-being Program

## Financial Assistance

Category 1  
Japanese Students

Living Expenses: **200,000 yen per month**

Research Funds: **200,000 yen per year**

Category 2  
Foreigners  
International  
Students

Research Funds: **200,000 yen per year**

Assistance will be provided for the standard duration of enrollment in your doctoral program

※ The amount of support may change depending on national policies and budgetary conditions

- ※ Regarding the payment of living expenses for AY2026, the amount for April to July will be paid together in July and will be paid monthly thereafter.
- ※ If you are an international student and have not yet come to Japan, the support will start after you arrive in Japan.
- ※ The living expenses payments are treated as miscellaneous income under tax law and is subject to income tax and resident tax.
- ※ Research funds will be allocated to and managed by the laboratory to which you belong.

## Interdisciplinary Collaboration and Career Path Formation Support

- **Mentor system**

Guidance on courses, research, presentation, English language, career paths, job hunting, etc.

- **Support/ guidance from distinguished professors, Cross-disciplinary advisors**

Guidance on research, career path, etc.

- **Generic skill test (PROG test)** Support for examination fee and commentary sessions (Only in Japanese)

- **Job Hunting Seminar**

## Doctoral Student Support Program

### AY2026 (Category 1: Japanese Students) Recruitment Details

<b>Affiliation</b>	Graduate School of Social and Cultural Sciences, Graduate School of Science and Technology, Graduate School of Medical Sciences, Graduate School of Health Sciences, or Graduate School of Pharmaceutical Sciences
<b>Eligibility</b>	Those who entered the doctoral program on April 1 <sup>st</sup> 2026 ✕No age limit for applicants
<b>Number of Students</b>	About 8 ✕There is no quota per graduate school

# [Category 1: Japanese students] Eligibility

- (1) Doctoral students who enrolled in April 2026
- (2) Japanese students who are not JSPS Special Research Fellows
- (3) Students who are deemed to NOT be receiving a stable income sufficient to cover living expenses (approximately 2.4million JPY/year) from a university, company, or other organization, such as a salary or executive compensation
- (4) Students who have never received a disciplinary action as stipulated in Article 55 of the Kumamoto University Regulations
- (5) Students who are able to complete the educational programs required by this Program throughout the support period

## Category 1: Japanese students who are eligible for research incentive expenses (equivalent to living expenses)

English machine-translated version on next page. Please refer to this Japanese version to confirm.

区分	該当例	在籍期間	対象の可否
①日本国籍を有する者	日本人、日本に帰化した外国人	—	○
②特別永住者 (日本国との平和条約に基づき日本の国籍を離脱した者等の出入国管理に関する特例法第3条)	入管特例法第3条の規定による法定特別永住者として本邦に在留する者	無期限	○
③永住者、日本人の配偶者等、永住者の配偶者等 (出入国管理及び難民認定法別表第2)	永住者	法務大臣から永住の許可を得た者	無期限
	日本人の配偶者等	日本人の配偶者、子、特別養子	5年、3年、1年又は6月
	永住者の配偶者等	永住者・特別永住者の配偶者及び本邦で出生し引き続き在留している子	5年、3年、1年又は6月
④定住者 (出入国管理及び難民認定法別表第2)	一定範囲のインドシナ難民、一定範囲のベトナム難民、日系3世、定住者の配偶者、帰化した日本人・永住者・特別永住者・定住者の実子、中国残留邦人及びその子、日本人の実子を扶養する外国人親 など	5年、3年、1年又は6月又は法務大臣が個々に指定する期間(5年以内)	×
	上記のうち将来永住する意思があると認められた者		○
⑤家族滞在 (出入国管理及び難民認定法別表第1)	教授、芸術、宗教、報道、高度専門職、経営・管理、法律・会計業務、医療、研究、教育、技術・人文知識・国際業務、企業内転勤、介護、興行、技能、特定技能2号、文化活動又は留学の在留資格をもって在留する者の扶養を受ける子など	法務大臣が個々に指定する期間(5年以内)	×
	①上記のうち、下記のいずれにも該当する者 ・国内で出生又は12歳に達した日の属する学年の末日までに初めて入国した者 ・日本の小学校等から高校等までを卒業・修了した者 ・大学等の卒業・修了後も日本で就労して定着する意思があると認められた者		○
	②本邦における在留期間とその他の事情を総合的に勘案して①に掲げる者に準ずると認められた者		
⑥右記の在留資格により在留する者 (出入国管理及び難民認定法別表第一の一から五)	(1)外交、公用、教授、芸術、宗教、報道 (2)高度専門職、経営・管理、法律・会計業務、医療、研究、教育、技術・人文知識・国際業務、介護、企業内転勤、興行、技能、技能実習 (3)文化活動、短期滞在 (4)留学、研修 (5)特定活動	区分の内容に応じて15日から5年の期間(高度専門職の一部は無制限)	×

## Category 1: Japanese students who are eligible for research incentive expenses (equivalent to living expenses)

English machine-translated version on this page. Please refer to the Japanese version on the previous page to confirm.

Category	Applicable Examples	Period of Stay	Eligibility (○/×)
① Persons with Japanese Nationality	Japanese citizens, foreign nationals naturalized in Japan	—	○
② Special Permanent Residents	Persons residing in Japan as statutory special permanent residents under the provisions of Article 3 of the Special Act on Immigration Control	Indefinite	○
(Article 3 of the Special Act on the Immigration Control of, Inter Alia, Those Who Have Lost Japanese Nationality Pursuant to the Treaty of Peace with Japan)			
③ Permanent Residents, Spouses or Children of Japanese Nationals, Spouses or Children of Permanent Residents	<b>Permanent Residents:</b> Persons who have obtained permission for permanent residence from the Minister of Justice.	<b>Permanent Residents:</b> Indefinite	○
(Appended Table 2 of the Immigration Control and Refugee Recognition Act)	<b>Spouses or Children of Japanese Nationals:</b> Spouses, children, or special adopted children of Japanese nationals.	<b>Spouses/Children (Japanese):</b> 5 years, 3 years, 1 year, or 6 months	○
	<b>Spouses or Children of Permanent Residents:</b> Spouses of Permanent Residents / Special Permanent Residents, and children born in Japan who continue to reside in Japan.	<b>Spouses/Children (Permanent):</b> 5 years, 3 years, 1 year, or 6 months	○
④ Long-Term Residents	Certain Indochinese refugees, certain Vietnamese refugees, third-generation Japanese descendants, spouses of Long-Term Residents, biological children of naturalized Japanese citizens / Permanent Residents / Special Permanent Residents / Long-Term Residents, Japanese orphans left in China and their children, foreign parents supporting biological children of Japanese nationals, etc.	5 years, 3 years, 1 year, or 6 months, or a period specifically designated by the	×
(Appended Table 2 of the Immigration Control and Refugee Recognition Act)			
(Continued)	Of the above, those recognized as having the intention to permanently reside in the future.	(As above)	○
⑤ Dependent	Children, etc., supported by a person residing with the status of residence of Professor, Artist, Religious Activities, Journalist, Highly Skilled Professional, Business Manager, Legal/Accounting Services, Medical Services, Researcher, Instructor, Engineer/Specialist in Humanities/International Services, Intra-company Transferee, Nursing Care, Entertainer, Skilled Labor, Specified Skilled Worker (ii), Cultural Activities, or	A period specifically designated by the Minister of Justice (within 5 years)	×
(Appended Table 1 of the Immigration Control and Refugee Recognition Act)			
(Continued)	1. Of the above, those who meet all of the following conditions: <ul style="list-style-type: none"> <li>• Persons born in Japan, or who entered Japan for the first time by the end of the school year in which they reached 12 years of age.</li> <li>• Persons who graduated from / completed Japanese elementary schools through high schools, etc.</li> <li>• Persons recognized as having the intention to work and settle in Japan after graduating from / completing university, etc.</li> </ul>	(As above)	○
(Continued)	2. Persons recognized as being equivalent to those listed in 1. based on a comprehensive consideration of their period of stay in Japan and other circumstances.	(As above)	○
⑥ Persons residing under the statuses of residence listed on the right	(1) Diplomat, Official, Professor, Artist, Religious Activities, Journalist	A period ranging from 15 days to 5 years depending on the classification (some Highly Skilled Professionals have an indefinite period)	×
	(2) Highly Skilled Professional, Business Manager, Legal/Accounting Services, Medical Services, Researcher, Instructor, Engineer/Specialist in Humanities/International Services, Nursing Care, Intra-company Transferee, Entertainer, Skilled Labor, Technical Intern Training		
(Appended Table 1, 1 to 5 of the Immigration Control and Refugee Recognition Act)	(3) Cultural Activities, Temporary Visitor		
	(4) Student, Trainee		
	(5) Designated Activities		

## Doctoral Student Support Program

### AY2026 (Category 2: International Students) Recruitment Details

<b>Affiliation</b>	Graduate School of Social and Cultural Sciences, Graduate School of Science and Technology, Graduate School of Medical Sciences, Graduate School of Health Sciences, or Graduate School of Pharmaceutical Sciences
<b>Eligibility</b>	Those who entered the doctoral program on April 1 <sup>st</sup> 2026 ✘ No age limit for applicants
<b>Number of Students</b>	About 3 ✘ There is no quota per graduate school

## [Category 2: International Students] Eligibility

- (1) Doctoral students who enrolled in April 2026**
- (2) Individuals whose status of residence is “Student” and who are not affiliated with any organization or institution other than this university**
- (3) Students who have never received a disciplinary action as stipulated in Article 55 of the Kumamoto University Regulations**
- (4) Students who are able to complete the educational programs required by this Program throughout the support period**

# Points to note (Common to Categories 1 and 2)

Students who are accepted into the program must comply with the following:  
In case of violation, financial assistance may be suspended.

- (1) Students should focus on their research activities**
- (2) Attend research ethics education and compliance education conducted by the University**
- (3) Students should confirm enrolment each month**
- (4) Students should submit a research plan and a research report every year to the Program Supervisor**
- (5) Throughout the support period, participants are required to complete the following educational programs as defined by this program:**
  - Complete Package Courses
  - Attend all colloquium and reporting sessions
  - Participate in one or more overseas training sessions during the period of support, or obtain credits for one of the following courses:  
Doctoral Cooperative Education through Research Internships or HIGO Internship II
- (6) Register with Coop-J Consortium system**

Please take at least two courses including at least one from a subject outside your graduate school

### Course from the Graduate School Liberal Arts Course

- |   |          |
|---|----------|
| ● Forefront of Research and Integration of Knowledge (held in Japanese) | 1 credit |
|---|----------|

### Courses from the Graduate School of Science and Technology (GSST)

- |  |          |
|--|----------|
| ● Current Science and Technology in Japan II (Advanced Science in Japan II.) | 2credits |
| ● Understanding Contemporary Society A                                       | 1 credit |
| ● Understanding Contemporary Society B                                       | 1 credit |
| ● Basic Science for Technological Innovation                                 | 1 credit |
| ● History of Sciences  | 1 credit |

※For GSST students

「Understanding Contemporary Society B」 can be counted as a subject from another graduate school

### Course from Graduate School Medical Sciences Pharmaceutical Sciences/Health Sciences (S-HIGO Program)

- |                                 |          |
|---------------------------------|----------|
| ● S-HIGO Cutting Edge Seminar B | 2credits |
|---------------------------------|----------|

### Course from Graduate School of Social and Cultural Sciences (WISE Program)

- |  |          |
|--|----------|
| ● In-Depth Cross-Cultural Understanding Program I  | 2credits |
| ● In-Depth Cross-Cultural Understanding Program II | 2credits |

# Career Development and Competency Development Package Courses

**Take at least  
2 courses**

## Courses conducted in collaboration with industry, government, and academia

<ul style="list-style-type: none"> <li>● <b>HIGO Leadership Training</b> Lectures and Seminars on Leadership Theory like those taught at Business School</li> </ul>	1 credit
<ul style="list-style-type: none"> <li>● <b>Doctoral Cooperative Education through Research Internships</b></li> <li>● <b>HIGO Internship II</b> Internship in government or company (30 hours, 5 days or more) ✳️ You can also take internship courses in your department</li> </ul>	2 credits 1 credit 1 credit
<ul style="list-style-type: none"> <li>● <b>HIGO Business and Governmental Seminar II</b> (Seminars from researchers and leaders of companies / government agencies)</li> </ul>	1 credit 1 credit
<ul style="list-style-type: none"> <li>● <b>Introduction to Management</b> You can learn about technology and management (such as MOT) through lectures</li> </ul>	1 credit

## Courses to train your English skills as a global researcher

<ul style="list-style-type: none"> <li>● <b>Exercise of Technical English I</b></li> </ul>	1 credit
<ul style="list-style-type: none"> <li>● <b>Exercise of Technical English II</b></li> </ul>	1 credit

## Overseas Training

You can plan and implement overseas training that contributes to interdisciplinary integration, career formation, internationalization, and transferable skill development.

ex.) ※\* The main purpose of the training must not be research.

- ① Participation in internship and training programs (including enrollment in internship courses offered by this university)
- ② Learning and activities at overseas companies, universities, institutions, etc.
- ③ Presentations at international conferences and meetings ALONG WITH visits to universities and institutions accordingly
- ④ Other

※ Travel expenses may be provided subject to review for those who wish to apply.

Instead of overseas training, it is also possible to complete either Doctoral Cooperative Education through Research Internships or HIGO Internship II. However, if you do this these subjects will not be counted toward the Career Development and Competency Development Package Course requirements.

## Colloquium

You can interact with graduate students from different fields and countries.

Group discussion and presentation in English

ex)

Training camp, workshops, etc.

※\* Content changes every year.

## Research and Learning Outcomes Reporting Session

You will acquire the skills to make presentations that are easy to understand for people in different fields.

Evaluation by faculty members and distinguished advisors from outside the university

▪ Screening for continuation in the Program

※\* The format of the reporting session changes every year.

# Application Process

Application guidelines and application documents can be downloaded from the website.  
Please apply on the website. [https://higoprogram.jp/en/bettercobeing\\_english/](https://higoprogram.jp/en/bettercobeing_english/)



- ◆ Program Application Form (fill out the application form directly)

## Application Documents

1. Statement of Purpose
2. Research Proposal
3. Confirmation of documents to be submitted (checklist)
4. Score from an external English exam (if you have one)

### 1 Submission of application documents

Please check application guidelines and enter required information in following application form. Download forms for Written Statement for Reason of Application and Research Plan, fill them up and upload in Submission box

[Link for Application Form](#)

[Link for Files Submission](#)

\*[Link for submission method](#)

- Consolidate the Statement of purpose, research plan, checklist and English score into a single PDF file and submit it to the submission box
- The file name is 「The symbol for your department - Full Name」

(E.g.) 「D - KUMAMOTO Taro.pdf」

\* Make sure the school letter is a capital letter.

G: Social and Cultural Sciences D: GSST

R: Medical Sciences Y: Pharmaceutical Sciences W:Health Science

# Application Procedure

Application period

Friday, May 1, 2026 – Friday, May 15, 2026 (Strictly Enforced)

## <Important Notes>

- In principle, changes cannot be made to the information provided after submission of the application documents
- Application documents will not be returned
- Applications with deficiencies (e.g., exceeding the maximum page limit) will not be reviewed.
- Those who provide false information in their application documents will lose their eligibility to apply, and even after selection, the decision to provide support may be revoked

# Selection Examination

## 1. Written application (Japanese or English)



The following will be assessed:

- **Motivation** (Clarity of motivation, vision for career path, research enthusiasm, readiness and eagerness to cultivate interdisciplinary learning and interdisciplinary research skills, and motivation to pursue career path realization)
- **Research Plan** (Achievements, clarity of objectives, specificity and feasibility of plans, clarity of application documents, societal significance of research, potential for integration with other fields and creation of new academic domains, etc.)

## 2. Interview screening (Japanese or English)



You will be asked and evaluated on the following:

- Motivation
- Reason for applying
- Research plan
- Career vision, etc.

Interviews will be conducted via Zoom

The interview date and time are scheduled for

Mid-June (approximately 6/9 (Tue.) ~ 6/10 (Wed.))

Details will be sent to you at a later date, to the email address you used on the application form

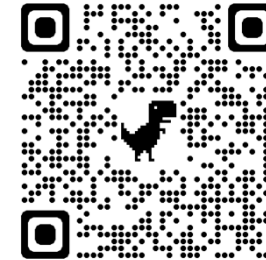
Notification of Selection Results

We plan to notify applicants by the end of June.

※ **【Category2:International Students】** : The interview will also confirm their intention to seek employment at a university, research institution, or company within Japan, and their willingness to contribute to the advancement of innovation in Japan.

# Better Co-being Program, Guide4AI ProgramQ&A

[https://higoprogram.jp/en/bettercobeing\\_english/](https://higoprogram.jp/en/bettercobeing_english/)



↓  
Application Guidelines

↓  
Steps from application  
to selection



1. Application
2. Enrolment
3. Financial Support
4. Obligations and Compliance for Program Participants
5. Other

If you have any other questions, please contact us at the following address!

Institute for Education and Student Affairs, Graduate Program Education Promotion Division

E-mail: [daigakuin-kyoiku@jimu.kumamoto-u.ac.jp](mailto:daigakuin-kyoiku@jimu.kumamoto-u.ac.jp)

# **How to Complete Your Application Documents: Key Points**



**\*The following examples are past forms.  
The notes remain unchanged, so please check and  
Please fill out this year's form.**

## 令和6年度（秋季）Better Co-being社会を切り拓く異分野共創型 博士イノベーター育成プログラム 申請フォーム application form

個人情報の取扱いについて (English below)

- (1) 申請書類に含まれる個人情報については、プログラム生の選考、その他本プログラムに係る業務を行うために利用します。
- (2) プログラム生の選考に用いた試験成績等の個人情報は、選考結果の集計・分析及び選考方法の調査・研究のために利用します。
- (3) 上記(1)及び(2)の業務を行うに当たり、一部の業務を外部の事業者へ委託する場合があります。この場合、外部の事業者と個人情報の取扱いが適切に行われるよう契約を結んだ上で、当該事業者に対して、取得した個人情報の全部又は一部を提供します。

Handling of personal information:

- (1) Personal information contained in the application documents will be used for selection of fellowship recipients and other purposes related to the fellowship program.
- (2) Personal information such as test results used for the selection of fellowship recipients will be used for the compilation and analysis of selection results and for the investigation and analysis of selection method.
- (3) In order to carry out (1) and (2), some aspects may be outsourced to an external company. In such a case, after making an appropriate contract for careful handling of personal information, all or part of the acquired personal information will be provided to the company.

\* 必須

1. 個人情報の取扱いについて Regarding the handling of personal information \* 

同意する I agree

2. 氏名 Name \* 

姓と名の間は全角スペースを入れてください。(例: 熊大 太郎)

Please put a full-width space between the family name and first name. (Example:[family name] [first name])


回答を入力してください

3. フリガナ Name in katakana

\* 


回答を入力してください

4. 生年月日 (西暦) Date of birth

\* 


日付を入力してください(yyyy/MM/dd)



5. 令和6年10月1日現在の年齢 Age on October 1,2024 \* 

回答を入力してください

6. 携帯電話 Mobile phone

\* 

回答を入力してください

7. Mail address

\* 

**An address where you can be reliably contacted  
Please fill it out so that there are no mistakes.**

回答を入力してください

8. Mail address (re-enter)

\* 


回答を入力してください

9. 入学する教育部 Affiliation \* 

- 自然科学教育部 Graduate School of Science and Technology
- 医学教育部 Graduate School of Medical Sciences
- 薬学教育部 Graduate School of Pharmaceutical Sciences

10. 指導教員名 Supervisor's name \* 

回答を入力してください

11. 申請について事前に指導教員の承諾を得ていること You must obtain prior approval from your supervisor for this application. \* 


**Before applying, be sure to receive a letter from your supervisor showing their approval**

- 承諾を得ている approved

12. 年額240万円以上の安定的な収入を得ていないこと（アルバイトを除く） Do not have a job with an annual income of 2.4 million yen or more (excluding part-time jobs) \* 

年額240万円以上の収入は無い No

15. このプログラム及びGuide4AIプログラム以外に申請中または受給決定済みの研究費や奨学金がある場合はその名称と金額、支給期間を記載してください。

If there are any other research funds or scholarships you are applying for or have been awarded in addition to this program and Guide4AI Program, please list their names, amounts and durations. 

回答を入力してください

16. このプログラム及びGuide4AIプログラム以外に申請中または受給決定済みの研究費や奨学金、補助金について、併願または併給ができることを確認してください。

If you are currently applying for other financial aids including scholarships or thinking about doing so, please ensure that you are allowed to apply for two or more concurrently or become a recipient of two or more financial aids at the same time by the financial aid offerors. \* 


確認しました Yes, I have checked.

該当無し Not applicable

**In addition to this program, please make sure that you can apply for or combine the research funds, scholarships, and grants that you are applying for or have already received.**

17. 申請する研究テーマ Research theme for the application \* 

回答を入力してください

18. 所持している英語スコア Score of external English test (such as TOEFL, TOEIC and IELTS)  
無い場合は無いと回答。If not, answer "no". \* 

回答を入力してください

19. 希望進路（予定） Desired career path (planned) \* 

アカデミア Research positions at universities, etc.

企業 private enterprise

官公庁 government administration office

起業 starting a business

海外 Overseas

その他 other

送信

**When you press Submit, the password for the submission box for submitting the application documents will be displayed. At this time, please be sure to record the password and do not forget it.**

# 1. Statement of Purpose

所属 Affiliation	
氏名 Name	
申請 プログラム Programs to apply for	<input checked="" type="checkbox"/> Better Co-being 社会を切り拓く異分野共創型博士イノベーター育成プログラム (Better Co-being program)

## 志望理由書

(プログラムを選んだ理由やキャリアビジョンなどについて)

Written Statement of Reasons for Application and Career Vision

- Please create it in Japanese or English.
- Please fill in an easy-to-read typeface with a font size of 11 points or more.
- No more than one page of A4 paper
- Please fill out the statement of purpose, research plan, checklist, English score (only for those who have it) in this order
- Consolidate into a single PDF file and submit to the submission box

# 2-1. Research Proposal Form A

※Please fill out Form A in no more than 2 pages

※ All applicants must submit

(Form A)

Please fill out the contents in Form A in legible font style and size. Do not change the format of Form A. Negligible changes are acceptable, but Form A should not exceed two pages of A4 paper (including figures).

## Research Plan

Name of applicant:

Name of graduate school and grade:

Name of Division (Department) :

Name of Supervisor:

Please fill in the graduate school affiliation and year, department (field), and name of your academic advisor as of the date indicated on the form.

### Title of Master's thesis

\* If you do not have a master's thesis, please write down the title of research you were performing before admission to doctoral course or the research you are currently performing.

### Outline of Master's thesis or past research (figures can be included)

- Please prepare in Japanese or English.
- Please fill in an easy-to-read typeface and font size of 11 or higher
- Do not change the formatting.
- It is possible to insert figures and tables.
- You can submit in either colour and monochrome

1

※ All applicants must submit

(Form A)

Please fill out the contents in Form A in legible font style and size. Do not change the format of Form A. Negligible changes are acceptable, but Form A should not exceed two pages of A4 paper (including figures).

## Academic achievements:

-Peer-reviewed papers published in international journals or books (including papers in the press).

-Non-peer-reviewed papers published in international journals or books (including papers in the press).

-Papers submitted or in the revision stage for peer-reviewed international journals or books.

-Papers in domestic or non-English journals and books.

-Presentations at international academic conferences (including oral or poster presentation)

-Presentations at domestic academic conferences (including oral or poster presentation)

-External research funds acquired during the past 5 years (fund names, research titles, duration, amount and name of principal investigator).

-Items warranting special mention. (patents, awards, etc., if any)

2

# 2-1. Research Proposal Form B

※Please fill out Form B in no more than 2 pages

(Form B)  
Better Co-being Program

Please fill out Form B in legible font style and size. Negligible changes are acceptable, but Form B should not exceed two pages of A4 paper (including figures).

**Title of your research proposal:**

**I. Outline of research**

**II. Background and purpose of research**

**III. Significance (Include the possibility of interdisciplinary fusion with other research fields, contribution to the construction of a Well-Being society, etc.)**

**IV. Experimental results obtained so far**

Results of previous experiments (including the results of preliminary studies). If you don't have any you can write "Nothing in particular".

**V. Detailed research plan for AY2024**

<Funding required:

Details of expenses:

(Form B)  
Better Co-being Program

※All applicants must submit

Please do not change the format of Form B. Fill out the contents in Form B in legible font style and size. Negligible changes are acceptable, but Form B should not exceed two pages of A4 paper (including figures).

**VI. Detailed research plan for AY2025 and after**

- Please prepare in Japanese or English.
- Please fill in an easy-to-read typeface and font size of 11 points or higher
- Do not change the formatting.
- It is possible to insert figures and tables.
- You can submit in either colour and monochrome

# 3. Confirmation of application documents (Checklist)

## Confirmation form (checklist) for application documents

☒ In preparing your application, please review the following checklist and check. ☒

No.	checklist	check
1	"Statement of purpose" is limited to one page.	<input type="checkbox"/> Yes
2	The "Notes" page of "Statement of purpose" has been removed.	<input type="checkbox"/> Yes
3	"Research plan (Better Co-being Program)" is limited to two pages each of Form A and Form B.	<input type="checkbox"/> Yes
4	The "Research Plan (Guide4AI Program)" is limited to two pages. (Form C)	<input type="checkbox"/> Yes <input type="checkbox"/> No application
5	The format of "Statement of purpose" and "Research plan" have not been changed.	<input type="checkbox"/> Yes
6	No plagiarism has been committed in the preparation of the application documents.	<input type="checkbox"/> Yes
7	Did you use a generated AI to prepare your application documents?	<input type="checkbox"/> Yes/ <input type="checkbox"/> No
8	If you selected "Yes" in 7., please describe the application documents and the parts of the application where the generated AI was used and how it was used.	
9	Are the application documents in one PDF file in the following order 1. Statement of purpose 2-1. Research Plan (Better Co-being Program) 2-2. Research Plan (Guide4AI Program) *only for applicants 3. Confirmation form (checklist) for application documents 4. English Score (only for those having one and limited to scores from English proficiency tests taken within the 2 years prior to the application submission)	<input type="checkbox"/> Yes

If the number of pages exceeds the specified number, it will not be reviewed.

4 is no longer applicable and will not be shown

When citing, be sure to cite the source to avoid unintentional plagiarism or infringement. It is recommended that each individual perform plagiarism checks using dedicated tools.

When using generative AI in scientific arguments, always be aware of truthfulness, honesty, and transparency.

\* If the submitted documents are incomplete, they may not be subject to review.

# Make sure to check your reports, papers, etc. for plagiarism!

To avoid unintended plagiarism, when creating applications, reports, papers, etc., make sure to check for plagiarism by yourself!

You can also check Japanese texts!

Please apply for a free iThenticate account using the link below

[https://docs.google.com/forms/d/e/1FAIpQLSeJOyzE5p5b1Vj9qzhWvCP59VCG8i782-CMXn3Xji\\_UVoKiqA/viewform](https://docs.google.com/forms/d/e/1FAIpQLSeJOyzE5p5b1Vj9qzhWvCP59VCG8i782-CMXn3Xji_UVoKiqA/viewform)

**充分ですか？**  
**論文チェック**

**論文の剽窃チェックは、**  
**専用ツールで**  
手早く、カンタンに、適切に

ブラウザで論文をアップロードして、待つだけ！  
たった数分で、世界最大級の学術情報データベースと照合、類似部分をお知らせ

アイセーティケイト  
**iThenticate®**

Webで簡単アップロード

79%

Match Overview

Item	Match	Score
1	CaseCheck: 2018-08-08	40%
2	Internet: 2018-08-08	27%
3	Internet: 2018-08-08	11%
4	Internet: 2018-08-08	<1%

類似箇所がひとめでわかる

類似元の学術情報へすぐに移動

ブラウザでiThenticateにログインし、チェックする論文をアップロード

iThenticateがデータベース内の学術コンテンツとテキストマッチング

類似部分を確認、必要に応じて論文を加筆・修正

**iThenticate®**

アップロード

Springer, Wiley, IEEE, Nature, Crossref, PubMed

出版物 1冊 5480文字以上  
Webページ 100ページ以上

2019年4月現在のコンテンツ数です

様々な形式のファイルに対応  
Word, PDF (テキスト認識されたもの), HTML, プレゼンテーション等の形式に対応。単一ファイルを指定する以外にも、複数のファイルをZIPにまとめて一括で、または大量に論文テキストをコピー＆ペーストしてアップロードできます。

英語はもちろん、日本語もチェック可能  
データベースには日本語の論文も含まれており、インターネット上の情報は言語を問わず収集しています。日本語の論文もチェックが可能です。

見やすい画面で類似部分をもなく確認  
iThenticateのデータベースと一致した箇所をハイライト表示で視覚的に把握でき、類似論文等も一覧で確認できます。その結果、引用、参考文献も自動的に類似元の宛先が判明し、加筆・修正を行うことができます。

(問い合わせ先)  
国立大学法人熊本大学 公正研究推進事務局 (内線:3242) [boushi@jim.kumamoto-u.ac.jp](mailto:boushi@jim.kumamoto-u.ac.jp)

# Why the Better Co-being Program?

- ✓ Can concentrate on your research without worrying about financial burdens
- ✓ In addition to research skills, acquire skills required by society
- ✓ Industry-government-academia, interdisciplinary, and multinational exchanges
- ✓ Receive career support specialized for doctoral studies

We look forward to receiving your application!

